

**MILTON KEYNES**  
**Local Safeguarding Children Board**

**Annual Report**

**1 April 2006 - 31 March 2007**

Author: Madeleine Foster, LSCB Co-ordinator



## MILTON KEYNES LOCAL SAFEGUARDING CHILDREN BOARD

### ANNUAL REPORT 2006 - 2007

#### INTRODUCTION

This is the first annual report produced by the Milton Keynes Local Safeguarding Children Board. This includes the period of transition from the previous MK ACPC arrangements to the establishment of the LSCB, with its far broader remit, and its progress from that time.

The period of 1 April 2006 - 31 March 2007 was a period of considerable change and development for the newly formed LSCB, which at the beginning of 2006 had no dedicated LSCB staff in post to progress the work. In light of this the decision has been taken to keep this first annual report brief and circulation limited. Subsequent reports will be more comprehensive and widely circulated.

During 2005/6 plans were developed to progress the transition from Area Child Protection Committees (ACPC) to Local Safeguarding Children Boards (LSCB) following the requirements of the Children Act 2004. Milton Keynes LSCB was established by the due date of 1 April 2006. The official launch of the Milton Keynes Local Safeguarding Children Board was included in the Annual Conference "Engagement and Participation of Children and Young People", in November 2006.

The structure (*see fig 1, page 8*) and membership of the LSCB were agreed, together with the Terms of Reference, Objectives, and working arrangements (*see pages 9 - 14*).

In 2006 the LSCB agreed to recruit to three key posts: Independent Chair, Co-ordinator and Administrator, but due to significant difficulties in recruiting, particularly to the Co-ordinator and Administrator posts, staff did not come into post until the 2007 - 2008 period. The three posts were to be jointly funded by the statutory partners as stipulated by Working Together.

Chairing arrangements during this interim period were carried out by members of the LSCB Executive Group; Sally Mottram, Assistant Director Commissioning, Milton Keynes Council chaired the LSCB during the early part of the period 1 April 2006 - 31 March 2007, with Carolyn Boyd, Group Director Milton Keynes Council chairing during the latter part.

## BACKGROUND

In March 2004, a Children's Bill was published, accompanied by a further strategic document "Every Child Matters: Next Steps", that marked the next stage in the reforms to children's services. The subsequent Children Act 2004 required the establishment of Children's Trusts and the "Working Together" 2006 document set out guidance and regulations for the setting up of Local Safeguarding Children Boards and the roles of the Board and its constituent members.

The three most important provisions of these documents were:

- The creation of Children's Trusts under the duty to cooperate
- The setting up of LSCBs
- The duty on all agencies to make arrangements to safeguard and promote the welfare of children

The 2004 Children Act placed a duty on all relevant authorities to make arrangements to safeguard and promote the welfare of children, delineating clearly how organisations in working with or coming into contact with children ensure that they have a regard to the safety and welfare of children in carrying out their normal functions. In order to achieve constructive and effective working relationships between individual practitioners across agencies, they are to be supported by:

1. The commitment of senior managers to safeguard and promote the welfare of children.
2. Clear lines of accountability.

Section 11 of the Children Act 2004 and Section 175 of the Education Act 2002 place duties and responsibilities on all organisations and individuals that provide services or work with children and young people to:

- Have senior managers who are committed to children's and young people's wellbeing and safety
- Be clear about people's responsibilities to safeguard and promote children's and young people's welfare
- Have effective recruitment and human resources procedures including checking staff and volunteers to make sure they are safe to work with children and young people
- Have procedures for dealing with allegations of abuse against members of staff and volunteers
- Make sure staff get training that helps them do their job well
- Have procedures about how to safeguard and promote the welfare of young people
- Have agreements about working with other organisations

The LSCB has been seeking to ensure that all partner agencies meet these requirements and will take this work forward in the future.

The purpose of the Local Safeguarding Children Board is to co-ordinate and ensure the effectiveness of agencies working to safeguard and promote the welfare of children. The LSCB holds everyone working with children, families and young people to account for safeguarding and scrutinises the work of the Children and Young People's Strategic Partnership Board (CYPSPB). It does this through scrutiny of strategy and policy, inquiry (performance monitoring, serious case reviews and, effective by 1 April 2008 at the latest, reviews of all unexpected child deaths), training and inter-agency policy development work overseen by the board and its sub-committees.

Safeguarding is defined by the guidance as:

- Protecting children from maltreatment; (traditional child protection functions, usually driven by LA social work)
- Preventing impairment of children's health or development (a wider remit involving everyone working with children or in situations where they have contact with children or young people)

The initial focus of the LSCB's work is on "staying safe", arguably the most important of the five outcomes as it is vital to the achievement of every one of them. However, once the effectiveness of the Board is assured in this area, its remit is far wider than the old Area Child Protection Committees, with an emphasis on prevention and promoting the welfare of children across all five Every Child Matters outcomes.

There are three very broad areas of activity for LSCBs set out in the guidance:

- Activity that affects **all** children and aims to identify and prevent maltreatment, or impairment of health or development, and ensure that children are growing up in circumstances consistent with safe and effective care;
- Proactive work to target particular groups of children and young people;
- Responsive work to protect children and young people who are suffering, or at risk of suffering harm, and, through serious case reviews and the new Child Death Reviews, which will look at **all** deaths of children not expected, within twenty four hours of the occurrence, eg: road deaths, deaths due to fires or other accidents, sudden illness, to attempt to recognise and prevent future such deaths.

In line with local authority and other public sector organisation activity, the engagement and active involvement of the communities involved, and specifically of children and young people is expected to be encouraged and facilitated.

The Director of Children's Services together with the developing Children's Trust have overall responsibility for the delivery of the five key outcomes of Every Child Matters. The LSCB will contribute to delivery and commissioning through the Children and Young People's Plan (CYPP), the Children and Young People's Strategic Group and the future Children's Trust arrangements.

The LSCB has the responsibility of ensuring the effectiveness and co-ordination of the safeguarding system. The delivery of the safeguarding system, however, remains the responsibility of the individual agencies and the Children's Trust.

## MAIN ACHIEVEMENTS OF 2006 - 2007

This was a period of consolidation and planning.

The main achievements of the LSCB during the period 2006 - 2007:

- The structure of the LSCB was agreed and established, together with Terms of Reference.
- Several sub-groups were formed to focus on implementing and informing the work of the Milton Keynes Local Safeguarding Children Board. Each group developed Terms of Reference and a work programme, derived from the LSCB Work Plan and reported to Board members on progress against this.
- Budgets were set to enable the work of the LSCB to be carried out effectively and efficiently.
- There was agreement by Board members to employ LSCB staff.
- A training contract was established between the LSCB and the NSPCC.
- Work was undertaken to start amending the inter-agency procedures in line with Working Together 2006.
- Groups were established to work on Protocols including Fabricated and Induced Illness, Sexually Active Young People and Forced Marriage Guidance.
- Response re licensing applications.

(Fig 1)

## MILTON KEYNES LOCAL SAFEGUARDING CHILDREN BOARD STRUCTURE

### STRATEGIC GROUP

Director Level

Functions: Funding & Ratifying

Meets three times/year

*Links to Boards/ Executive Committees of Statutory Bodies and high level Planning Groups, eg Local Strategic Partnership, Strategy Group, Cabinet, PCT Board, Police*

### EXECUTIVE MANAGEMENT GROUP

Senior/Middle Managers

Functions: Performance Management, Planning, Advising and Chairing Sub-Groups

Meets six times/year

*Links to other 'safeguarding' boards/ groups eg Multi Agency Public Protection Arrangements, Domestic Violence Fora, Vulnerable Adults Protection Committee. etc.*

### SUB-GROUPS

First Line Manager/Practitioner Based

Functions: Implementing and Informing

Meet six-weekly intervals, or bi-monthly

*Link to internal management groups of statutory bodies and mid-level planning groups eg Children and Young People's Planning Group, Departmental Management Team*

*Sharing of information between sub-groups and with LSCB Executive Management Group*

Audit & Evaluation Sub-Group

Communications Sub-Group  
(did not meet until mid-2007)

Policy & Procedures Sub-Group

Training & Learning Sub-Group

## MK LSCB TERMS OF REFERENCE

### CONTEXT

The Children Act 2004 Section 13 requires each Children's Services Authority (CSA) to establish a Local Safeguarding Children Board (LSCB) by April 1 2006. The Act prescribes a mandatory list of agencies who must be members and the broad objectives of a LSCB.

### ROLE

The role of Milton Keynes LSCB is to contribute to the wider Children's Trust arrangements that aim to improve the overall wellbeing of children in Milton Keynes area boundaries, with a particular focus on the 'staying safe' outcome. It will undertake this by co-ordinating and ensuring the effectiveness of what member organisations do individually and together. However the LSCB has a separate identity and independent voice and will form a view of the quality of local activity and advise on ways to improve, challenging organisations where necessary in order to fulfil this role.

The LSCB will contribute to the delivery and commissioning of services through its contribution to the Milton Keynes Children and Young People Plan.

### OBJECTIVES

The objectives of Milton Keynes LSCB, as set out in the Children Act 2004 section 14, are:

- a) To co-ordinate what is done by each person or body represented on the board for the purposes of safeguarding and promoting the welfare of children in the area of the authority by which it is established; and
- b) to ensure the effectiveness of what is done by each person or body for these purposes.

### FUNCTIONS

The functions of Milton Keynes Local safeguarding Children Board are those set out in The Local Safeguarding Children Board Regulations 2006:

- a) developing policies and procedures for safeguarding and promoting the welfare of children in the area of the authority, including policies and procedures in relation to—

- (i) the action to be taken where there are concerns about a child's safety or welfare, including thresholds for intervention;
  - (ii) training of persons who work with children or in services affecting the safety and welfare of children;
  - (iii) recruitment and supervision of persons who work with children;
  - (iv) investigation of allegations concerning persons who work with children;
  - (v) safety and welfare of children who are privately fostered;
  - (vi) Milton Keynes co-operation with neighbouring children's services authorities and their Board partners;
- (b) communicating to persons and bodies in the area of the authority the need to safeguard and promote the welfare of children, raising their awareness of how this can best be done, and encouraging them to do so;
- (c) monitoring and evaluating the effectiveness of what is done by the authority and their Board partners individually and collectively to safeguard and promote the welfare of children, and advising them on ways to improve;
- (d) participating in the planning of services for children in the area of the authority;
- (e) undertaking reviews of serious cases and advising the authority and their Board partners on lessons to be learned.

The regulations also set out a further function for LSCBs from 1 April 2008

- (a) collecting and analysing information about each death with a view to identifying—
- (i) any case giving rise to the need for a review mentioned in regulation 5(1)(e);
  - (ii) any matters of concern affecting the safety and welfare of children in the area of the authority; and
  - (iii) any wider public health or safety concerns arising from a particular death or from a pattern of deaths in that area; and

- (b) putting in place procedures for ensuring that there is a co-ordinated response by the authority, their Board partners and other relevant persons to an unexpected death.

## **MEMBERSHIP**

### **THE ROLE OF MEMBERS**

Each individual member of the Milton Keynes LSCB has a duty to contribute to the effective work of the LSCB. This should take precedence over their role as a representative of their organisation.

Members will be appointed to the LSCB by their own organisation but must be people with a strategic role in relation to safeguarding and promoting the welfare of children within their organisation. They must be able to speak for their organisation with authority, commit their organisation on policy and practice matters and hold their organisation to account.

### **CHAIR**

To maintain independence the Milton Keynes LSCB will be chaired by an independent chair person. The chair will be accountable to the lead member for children's services through the Director of Children's Services.

### **WORKING ARRANGEMENTS**

The Milton Keynes Local Safeguarding Children Board structure is designed to address the dilemma of enabling all the relevant people to be engaged with the business of the Board whilst ensuring that meetings do not become unwieldy and therefore ineffective.

### **LSCB STRATEGY GROUP**

The LSCB Strategy Group membership comprises those at senior strategic level from the key statutory agencies. The Independent Chair will chair the group.

- Children's Services
- Superintendent Operational Support Thames Valley Police
- Assistant Chief Probation Officer
- Director of Public Health
- Children's Lead Strategic Health Authority

This group will meet three times per year and will agree funding and ratify major policies, for example the Business Plan of the LSCB. The chair of the executive management group will make a progress report on the plan to each meeting of the strategic group. Any weaknesses in services that are identified through audits and evaluations will also be reported to this group, as will any concerns that any Board partner is not performing effectively in safeguarding and promoting the welfare of children.

In respect of funding, the Strategy Group will agree the overall budget for the LSCB and how contributions will be weighted between the relevant agencies.

The Strategy Group will also need to make decisions in relation to when to instigate serious case reviews and would be advised in relation to any matters of public/media interest.

#### **LSCB EXECUTIVE MANAGEMENT GROUP**

The Executive Management Group comprises a wider group of interested agencies as well as those with a particular professional expertise. It is chaired by the Independent Chair.

#### Health

- Director of Primary Care Services
- Director of Mental Health and Learning Disabilities
- Representative from NHS Direct
- Representative from the Hospital Trust
- Representative from Ambulance Trust
- Designated Doctor and/or Nurse

#### Local Authority

- Group Director Strategy Commissioning and Quality
- Group Director Specialist Support
- Group Director Sure Start and Community Learning
- Youth Offending Team Manager
- Representative from Housing
- Professional Advisors in relation to Education and Children's Social Care

#### Police

- Chief Inspector

#### Voluntary Organisations

- NSPCC
- NCH Action for Children
- The Children's Society

### Others

- Assistant Chief Probation Officer
- Director Oakhill STC
- Governor HMP Woodhill
- Representative from CAFCASS
- Legal Advisor
- Community Safety Partnership

The above executive will meet on a bi-monthly basis. It will monitor the work of the sub-groups and ratify policies and procedures and will need to decide a suitable quora. It will agree the business plan and monitor progress against this. It will also determine what data needs to be reported to help it monitor the arrangements for safeguarding children.

### **LSCB SUB-GROUPS**

Each of the four proposed sub-groups will be chaired by a member of the LSCB Executive Management Group.

1. Audit and Evaluation Sub-Group, which will include a serious case review function
2. Communications Strategy Sub-Group which will ensure that the work of the LSCB is publicised and have a stakeholder engagement function
3. Policy and Procedures Sub-Group
4. Training and Learning Sub-Group

These groups will include first line managers and practitioners and will focus on implementing and informing. The Business Co-ordinator will be a member of all sub-groups and provide a co-ordination of work across the groups. Each group will have an agreed work programme, derived from the LSCB Business Plan and report at each meeting on progress against this.

### **STAKEHOLDER GROUPS**

Stakeholder meetings will be organised at set periods with particular topics/focus to ensure that the views, experience and knowledge of a wide range of 'linked' agencies and the public are fully incorporated.

Linked individuals/agencies as specified by the guidance include: service users, CPS, sports services, the Coroner etc. We also anticipate that professional groups such as Teachers, Dentists and GPs and Health Group Stakeholders may be engaged more effectively by use of a stakeholder model rather than the current situation whereby individuals sit on the ACPC without the benefit of structured reporting links back to their professional groups. This model would

help the LSCB to be linked to and potentially influence a wider agenda in relation to safeguarding children and promoting their welfare.

#### STAFF

As well as the independent chair, there will be a Business Co-ordinator and Administrator for the LSCB. These will support the LSCB in undertaking its work and attend all meetings of the sub-groups as well as the LSCB Executive Board.

#### GOVERNANCE AND ACCOUNTABILITY

The Milton Keynes Local Safeguarding Children Board will cover the borough of Milton Keynes, which is largely co-terminus with the PCT and Thames Valley Police Division.

The role of the LSCB is to ensure the effectiveness of the arrangements made by individual agencies and the wider partnership to safeguard and promote the welfare of children and young people. It will maintain an independent voice and make regular reports, highlighting progress and raising areas for improvement as well as any concerns to the Children and Young People Strategy Group, Learning and Development Policy Development Committee, Primary Care Trust Board and other partner bodies.

The Board may also, if it finds that any partner is not performing effectively in safeguarding and promoting the welfare of children, and it is not convinced that planned action to improve performance will be adequate, take these concerns to those individuals and organisations that need to be aware of the failing and may be able to take action. This includes taking these concerns to the most senior person in the organisation, to the relevant inspectorate or if necessary to the relevant Government Department.

To support the independence of the LSCB, an independent chair will be appointed by the local authority in collaboration with Board partners. The chair will be a person of sufficient standing and expertise to command the respect and support of all partners. This chair will be accountable for the effectiveness of their work as chair to the Council through the Director of Children's Services to the Lead Member for Children's Services.

The LSCB is a formal consultee for the Children and Young People Plan.

## MILTON KEYNES LSCB SUB-GROUPS

During the period 1 April 2006 - 31 March 2007 there were three active LSCB sub-groups: Audit & Evaluation, Policy & Procedures and Training & Learning. The Communications sub-group did not meet until mid-2007 due to the delay in recruiting to the LSCB Co-ordinator post; the original intention was that the Co-ordinator would chair the meetings.

Each sub-group produced its own terms of reference and annual work programme, based on the Board's first Work Plan. The sub-group chairs have reported to the LSCB Executive meetings on the sub-group progress against the work programme. In addition, there are also working groups linked to individual sub-groups, which have included Allegations Management & Safer Recruitment, and Sexually Active Young People.

The following pages include the terms of reference and membership of each of the three active sub-groups together with a brief report on their main areas of activity during the period 1 April 2006 - 31 March 2007.

## MK LSCB AUDIT & EVALUATION SUB-GROUP REPORT

### MEMBERSHIP

John Akers	Education
Amanda Blake	TV Police
Eileen Friday	MKC Children's Social Care
Jacqui Hogbin	MKC Conference & Review Service
Philip Latham	Milton Keynes PCT/Sub-Group Chair
Sally Mottram	MKC Social Care
Roland Payne	MKC Housing

With thanks to Kirsty Brice, Jo Hooper and Fiona West who also participated.

The sub-group met for the first time on 15 August 2006. Terms of Reference were set out and a work programme established. The following items made up the work programme.

1. Develop process for Serious Case Reviews (*see flowchart in fig 2, page 12*)
2. Develop process for local reviews of cases not meeting the SCR criteria but considered needing review
3. Agree confidentiality/information-sharing arrangements
4. Consider implications of national guidelines
5. Develop a process of self-evaluation for agencies
6. Develop a process to ensure MK LSCB meets requirements to monitor all child deaths (in an embryonic stage)

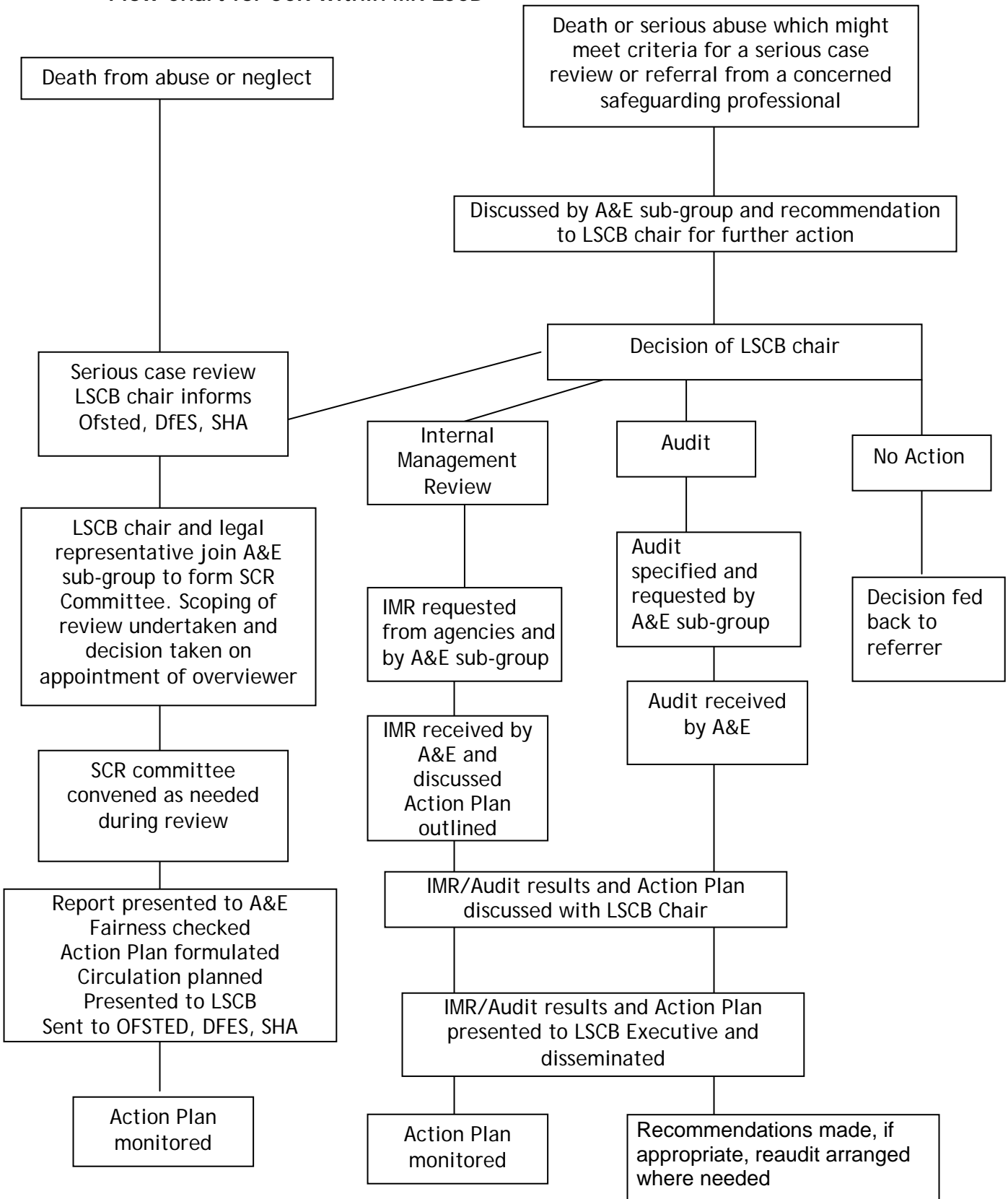
In addition to the work programme the sub-group has organised and overseen Internal Management Reviews into a number of cases.

- BW - a young person who suffered serious accidental injuries whilst in Local Authority care.
- CS - a young person who was injured whilst in an emergency placement for Mental Health problems.
- DA - a young person who committed suicide.

The recommendations from the DL Serious Case Review were also followed up.

- The sub-group was disappointed in the conduct of the CT case in which the need for a Serious Case Review has neither been confirmed nor refuted despite almost two years having passed. The sub-group is awaiting the outcome of the decision by CPS regarding the police investigation surrounding the death of CT, when a decision will be made regarding the need for a SCR. This has raised issues when police investigations become protracted.

## Flow Chart for SCR within MK LSCB



## MK LSCB POLICY AND PROCEDURE SUB-GROUP REPORT

### MEMBERSHIP

Amanda Blake	Thames Valley Police (CAIU)
Andrew Facherty	Education
David Howe	MKC Conference & Review Service
Judith Knight	MKC Legal/Sub-Group Co-Chair
Kelly Lockwood	MKC Children's Social Care
Anthony Miller	CAFCASS/Sub-Group Co-Chair
Jo Ulyett	MK General Hospital

The terms of reference are attached. The LSCB added to the remit of the group on 20 February 2007 as follows:

- i) the sub-group being nominated as the point of contact for agencies seeking the approval of the LSCB for their child protection policy
- ii) that the sub-group checks the policy and makes recommendation to the agency for action
- iii) policy agreed by the sub-group then presented to the LSCB for final approval

During 2006 - 2007 the group, in conjunction with other sub-groups, has worked on the following matters:

- 1) Update the inter-agency policies and procedures in the light of the new Working Together 2006 guidance. Ensure that agency responsibilities are understood.
- 2) Review recruitment and selection policies, information sharing and supervision and ensure that all agencies have appropriate policies in place. Consider policy and practice in handling investigations into allegations against staff.
- 3) Consider the implications of the Adoption and Children Act and make recommendations for further action.
- 4) Monitor a local policy for children visiting any Custodial Establishments in the area.
- 5) Review the guidance for Local Authorities on bullying and make recommendations.
- 6) Establish procedure for the treatment of children with HIV or where risk of transmission of HIV.
- 7) Consider arrangements for Section 47 investigations where there are long bone fractures.

Updates on the above items have been included in the regular Policy & Procedures sub-group reports to the LSCB.

## **POLICY AND PROCEDURE LSCB SUB GROUP TERMS OF REFERENCE**

### **INTRODUCTION**

The overall remit of this group is drawn from Milton Keynes Local Safeguarding Board (LSCB) Executive Committee. The work of Policy and Procedure sub-group is part of the overarching function of the LSCB. Minutes from this sub-group will be available to the Executive Committee.

### **MEMBERSHIP**

- Joint Chair: Judith Knight (Principal Lawyer MKC)  
Anthony Miller (Service Manager CAFCASS)
- Representative from Health Service
- Representative from Education
- Representative from MKC Children's Services

Other representatives will be co-opted to join the group as work progresses and the need arises.

### **Objective**

To ensure that inter-agency policy and procedures remain relevant to the LSCB and are updated.

### **Function**

This group will

- Operate within the context and terms of LSCB
- Contribute to the overall work of LSCB
- Report to each LSCB meeting on the progression of the group work plan
- Carry out work identified in the LSCB annual work plan

### **Frequency of Meetings**

- Meetings will be held bi-monthly
- Group members are expected to attend at least 75% of meetings.
- First meeting to be convened in September 2006

### **Review**

These terms of reference are to be reviewed on a regular basis.

## MK LSCB TRAINING AND LEARNING SUB-GROUP REPORT

### MEMBERSHIP

Kate Bowden	MKC Young Peoples & Young Asylum Seekers Service
Brighde Boyle	MKC Social Care Training
Kelly Glistler	Thames Valley Police/Training Pool member
Karen Rogers	MKC Strategy, Commissioning & Quality/Sub-Group Chair
Jo Hooper	MKC Strategy, Commissioning & Quality/Sub-Group Chair
Eileen Moran	NSPCC/Inter-Agency Project Co-ordinator
Jayne Murphy	EWO, Milton Keynes Council
Tracy O'Brien	MK PCT
Charlie Reston	NSPCC
Hilary Solway	MKC Youth Project & Staff Dev Officer
Jo Ulyett	MK General Hospital

The MK LSCB Training and Learning Sub-Group have met on a six-weekly basis to consider training issues, oversee the review and development of the multi-agency training programme, and act as the point of reference, communication and dissemination of training information between the individuals' own organisations and the sub-group.

The Milton Keynes Inter-Agency Training Project has provided a programme that meets standards quoted in Working Together to Safeguard Children 2006 and is based on the principles of the Promoting Inter-Agency Training (PIAT) national collaborative working group.

The training programme endeavours to meet the needs of a broad audience based on the premise that all attendees will have a basic understanding of signs and indicators of abuse. The courses range from a Level B course for those who work regularly with children and young people to Level C Specialist courses designed for experienced professionals who have an operational or particular responsibility for safeguarding children.

Training was delivered to 399 practitioners from all sectors of the statutory, private and voluntary sector during 1 April 2006 - 31 March 2007. A further 99 practitioners attended the annual conference held in November 2006.

Non-attendance continues to be a concern - there was a 20% non-attendance rate for training events held in 2006 - 2007 (13.65% in 2005-2006). On the positive side, there was an increase in the numbers of Education staff who attended inter-agency training.

94% of delegates attending training rate the events as either 'completely' or 'mostly' relevant, 97% stating that their learning objectives had either been 'completely' (62%) or 'mostly' (35%) achieved.

An annual training needs analysis has helped to address the vital need for a more focused and co-ordinated overview of single-agency safeguarding and promoting welfare training in Milton Keynes.

Engagement with the non-statutory and voluntary sector has seen a welcome improvement, largely due to the Annual Conference Planning Group members' enthusiasm and our having contact details of individuals. Courses continue to be widely advertised via the MK Play Association Newsletter, MK Council's Health and Social Care Training Opportunities Brochure, MK Schools Newsletter, our own Annual Brochure, and regular reminders via email to members of the Training Pool and Agency representatives. The proposed development of a LSCB website would further assist the communication of the training.

The inter-agency training is delivered by a multi-agency training pool, which currently has 18 active members. Trainers co-train, which gives the individuals the opportunity to work with people from different agencies, as well as giving a broader view to the training.

Mentoring and support of training pool members is offered by the Training Co-ordinator via an edited version of NSPCC CASPAR updates highlighting new legislation, publications, government consultation documents etc, and by means of Training for Trainer events. Last year two such events took place, 'Diversity Issues in the Training Room' and 'Children's Rights'.

In addition, speakers are invited to the Domestic Violence course, including the Director or MK Women's Aid, solicitors from local legal firms, police officers from the local Domestic Violence Unit and the Director of the MK Lighthouse Project, together with the Link Health Visitor for that project.

Work is currently being carried out on reviewing the Domestic Violence inter-agency training and it is hoped to reintroduce the Disabled Children inter-agency training to the training programme in early 2008.

## **MK LSCB TRAINING AND LEARNING SUB GROUP TERMS OF REFERENCE**

### **Representation**

Representatives of TSG (TLSG) are mandated to act on behalf of their organisation in relation to the development of multi-agency training services and will:

- Act as the point of reference, communication and dissemination of training information between the individuals own organisation and TSG (TLSG).
- Provide TSG (TLSG) with an overview of their own organisation's training requirements, strategy and priorities, in relation to single and multi-agency training.
- Prioritise candidates for course applications within their own organisations allocation, to ensure the most effective and efficient use of resources.

### **Objectives - The TSG (TLSG) will:**

- Develop Strategic Overarching Training Standards for single as well as multi agency safeguarding training delivery, ensuring that all aspects of inter-agency training and development are based on PIAT principles.
- Monitor the size, strength and skill requirements of the multi agency training pool and facilitate the recruitment of additional members, or external specialist speaker's/trainers as required.
- Maintain awareness of external local and national political and legislative changes that may impact upon the delivery of the multi agency training programme and report issues to the LSCB.
- Provide an annual training programme agreed by LSCB in order to deliver, evaluate and where required modify training programmes that cover local and national priorities, in safeguarding and promoting the welfare of children.
- Review targets and priorities in light of national and local developments, ensuring all training programmes (single and multi-agency) are responsive to changing local requirements.
- Assess and prioritise all requirements for inter-agency training within an agreed local Training Needs Analysis (TNA) process.
- Monitor the multi agency projects income and expenditure requirements, specifically relating to delivery of the multi agency training programmes, reporting significant budgetary challenges to the LSCB.
- To provide written reports at a frequency determined by the LSCB, of both qualitative and quantitative data, including feedback on agreed performance indicators.
- To construct an annual work programme for approval by the LSCB.
- To provide an annual report to the LSCB.

## Budget 2006 - 2007

2006/07 was the inaugural year for LSCB, and the initial budget proposal of £130,730 was based on an estimate of likely costs, including the staffing costs of three key posts - the Independent Chair, Co-ordinator and Administrator, which we were unable to recruit during the year. This left an underspend for this financial year; actual expenditure amounted to £54,369.35 (see agency contribution breakdown in table below). The budget contributions were adjusted in February 2007, and a final adjustment incorporated into the agency contributions for 2007/08. Proportionate refunds were paid to organisations.

### 2006 - 2007 Agency Contributions to LSCB Budget

Agency	%	Contribution
Local Authority	57.0%	31,044.90
PCT	26.5%	14,407.88
Police	12.7%	6,904.91
Probation	2.3%	1,250.50
CAFCASS	0.4%	217.48
Income	1.0%	543.69
		<b>54,369.35</b>

\* c £16,000 NSPCC contribution to the MK LSCB inter-agency training